

# THE MERGE

+/- 31,816 SF FOR LEASE IN EASTVALE, CA

NEC of Limonite Ave. and Archibald Ave.



**BUILDING 3-UNIT B**

**14129 THE MERGE ST**

## PROJECT SPECIFICATIONS:

**UNIT SIZE:** 31,816 Square Feet  
Part of a larger 63,853 SF building  
**OFFICE:** 1,525 Square Feet  
**MEZZ OFFICE:** 1,497 Square Feet  
**TOTAL DOCK HIGH DOORS:** 4  
**TOTAL GRADE LEVEL DOORS:** 1  
**MINIMUM CLEARANCE:** 30'  
**SPRINKLER SYSTEM:** ESFR  
**POWER:** 1200 AMP UGPS  
**WAREHOUSE LIGHTING:** LED  
**SKYLIGHTS:** 2.5%

## THE MERGE PROJECT FEATURES:

- Access to Archibald Ave and Limonite Ave
- +/- 55 miles to the Ports of LA and Long Beach
- Direct Access to I-15, SR 60, SR 71, & SR 91 Freeways
- Inland Empire West location with close proximity to Ontario International Airport

OWNED AND MANAGED BY:



All information furnished regarding property for sale, rental or financing is from sources deemed reliable, but no warranty or representation is made to the accuracy thereof and same is submitted to errors, omissions, change of price, rental or other conditions prior to sale, lease or financing or withdrawal without notice. No liability of any kind is to be imposed on the broker herein.

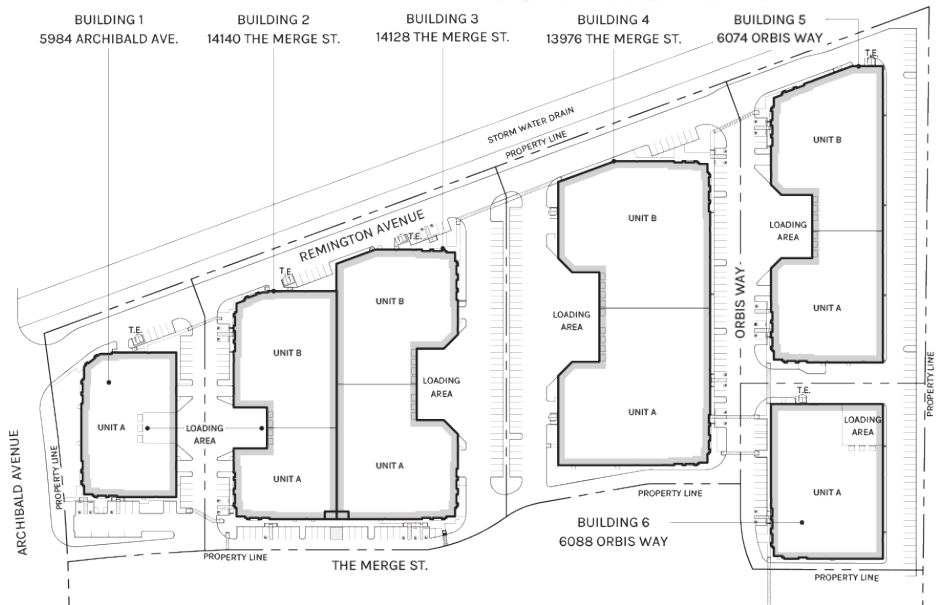
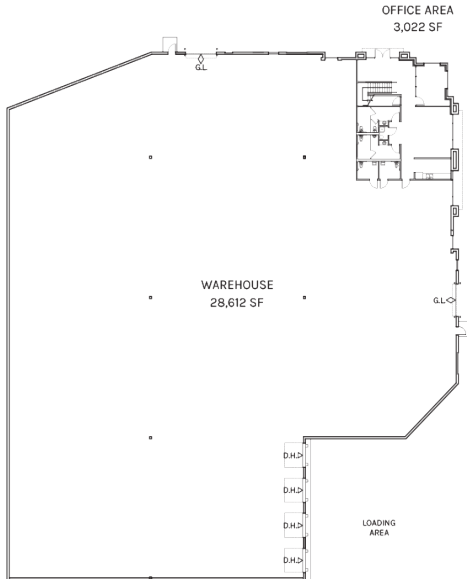
# THE MERGE

+/- 31,816 SF FOR LEASE IN EASTVALE, CA

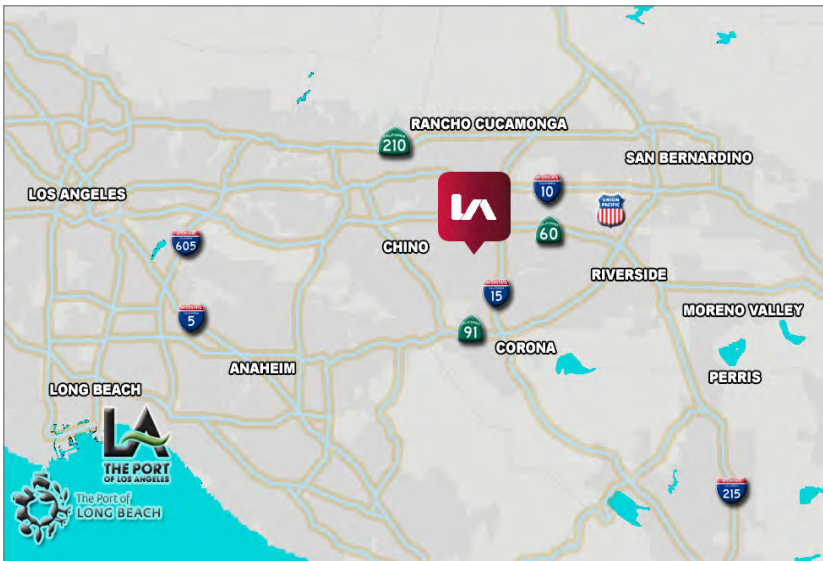
NEC of Limonite Ave. and Archibald Ave.



## THE MERGE BUILDING 3-UNIT B SITE PLAN



## REGIONAL AERIAL



For Further Information Please Contact:

**Bill Heim**  
bheim@lee-assoc.com  
D 909.373.2901  
License ID: 00776174

**Alex Heim**  
aheim@lee-assoc.com  
D 909.373.2701  
Licence ID: 01945521

**Nesha Ritchie**  
nritchie@lee-assoc.com  
D 909.373.2942  
Licence ID: 01936359

**Lee & Associates**  
3535 Inland Empire Blvd  
Ontario, CA 91761  
lee-assoc.com

p 909.989.7771



All information furnished regarding property for sale, rental or financing is from sources deemed reliable, but no warranty or representation is made to the accuracy thereof and same is submitted to errors, omissions, change of price, rental or other conditions prior to sale, lease or financing or withdrawal without notice. No liability of any kind is to be imposed on the broker herein.